

Update CFMC IRA status

Martha Prada

CFMC IRA Coordinator

186 CFMC Regular meeting

St. Croix, April 22-23, 2025



NOAA

NATIONAL OCEANIC AND
ATMOSPHERIC ADMINISTRATION
UNITED STATES DEPARTMENT OF COMMERCE



1

2

3

4

5

6

Understanding extreme events and its impact on the fishery ecosystem and the fishers

Understanding Impacts of changing environments and Fishing Pressure on Dolphinfish

Life history of priority managed species and evaluating their vulnerability to changing environmental conditions

Environmental vulnerability to Assess the ecological under a recovery plan: queen conch & Nassau grouper

Adapting to Extreme events in the U.S. Caribbean: Implementing a Smart Approach to Ensure Sustainable Red Hind and Lobster Fishing

US Caribbean Community of Practice Hub to Operationalize Ecosystems Based Fisheries Management

Approved

	Company	Principal investigator	Budget
1.	Consultores Educativos Ambientales C.S.P.	Alida Ortiz	\$228,809 (\$175,920)
2.	Islamar Research Expedition LLC	Chelsea Harms-Tuohy	\$384,082 (\$352,732)
3.	Gulf & Caribbean Fisheries Institute	Bob Glazer & Alejandro Acosta	\$349,035
4.	Beyond Our Shores Foundation	Wessley Merten	\$372,921 (\$351,960)
5.	HJR Reefscaping	Hector Ruiz & Michelle Schärer	\$363,485
6.	USVI Department of Planning and Natural Resources, Division of Fish and Wildlife	Sennai Habtes	\$575,928.96

	CFMC		Budget
1.	IRA Coordination	Martha Prada	\$215,880 (\$199,080)
2.	CFMC administrative support	CFMC staff	\$169,492
	Grand total		\$2.660,440

Project	Allocated funds	Total payments	% Technical progress	% financial progress
CFMC-IRA-2024-001 Martha Prada	\$215,880.00	\$43,655.69	35	20
CFMC-IRA-2024-002 Consultores Educativos Ambientales	\$228,809.00	\$31,016.60	7	13
CFMC-IRA-2024-003 HJR Reefscaping	\$363,485.00	\$29,999.33	10	12
CFMC-IRA-2024-004 GCFI	\$349,035.00	\$45,000.00	20	13
CFMC-IRA-2024-005 Beyond Our Shores Foundation	\$372,921.00	\$108,786.81	20	29
CFMC-IRA-2024-006 Isla Mar Research Expedition LLC	\$384,082.00	\$42,400.80	10	11
Total / Average	\$1,914,212.00	\$300,859.23	18	16



1. Understanding extreme events and its impact on the fishery ecosystem and the fishers

- ✓ 25 fishing villages visited: fishers beliefs & experiences, fish abundance, changes in fishing practices, and community well-being.
- ✓ Fishing coastal infrastructure observations.
- ✓ Structured interviews: noticeable increase in water temperatures, frequency of sargassum invasion, coastal pollution, not clear linkages to climate change.
- ✓ 6 subcontracts signed: 1 administrative assistant, 5 experts, 1 illustrator, 1 accounting assistant.
- ✓ Story book under development.

2. Understanding Impacts of changing environments and Fishing Pressure on Dolphinfish



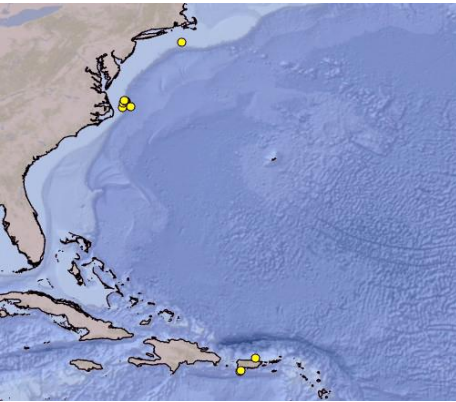
4 pop-up tags deployed in PR

SJU: 34" female

SJU: 40" male

LPG: 41" female

LPG: 39" female, 30 days at liberty



3 pop-up tags deployed in the MAB region

RI: 34" FL male, 20.35 days at liberty

RI: 32" FL female, 26.25 days at liberty

NC: 30" FL female, transmission 0.9 days

2 pop-up tags deployed in USVI

STCX: 45" FL female

STCX: 42 FL male

105 dolphinfishes tagged with plastic dart tags (PDATs)

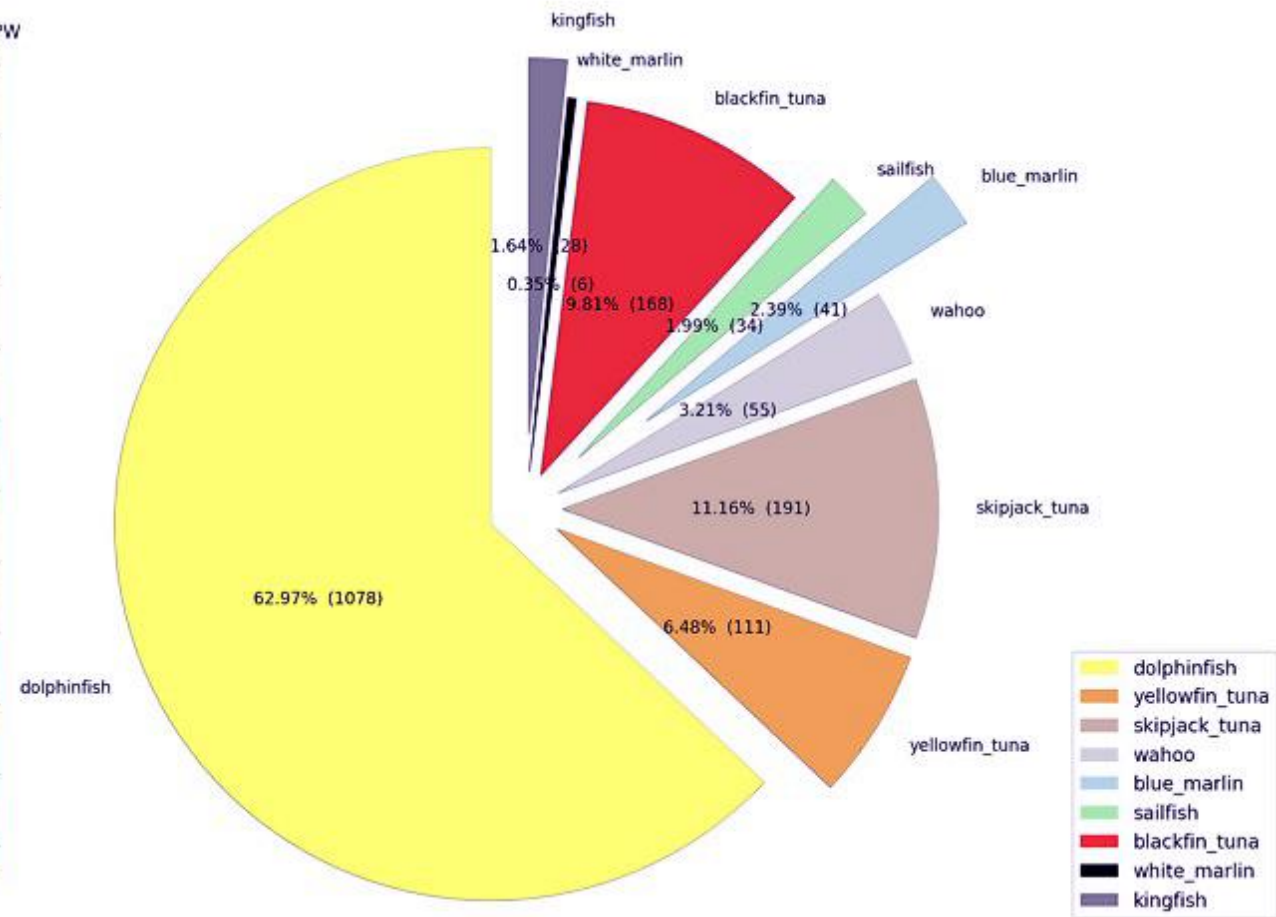
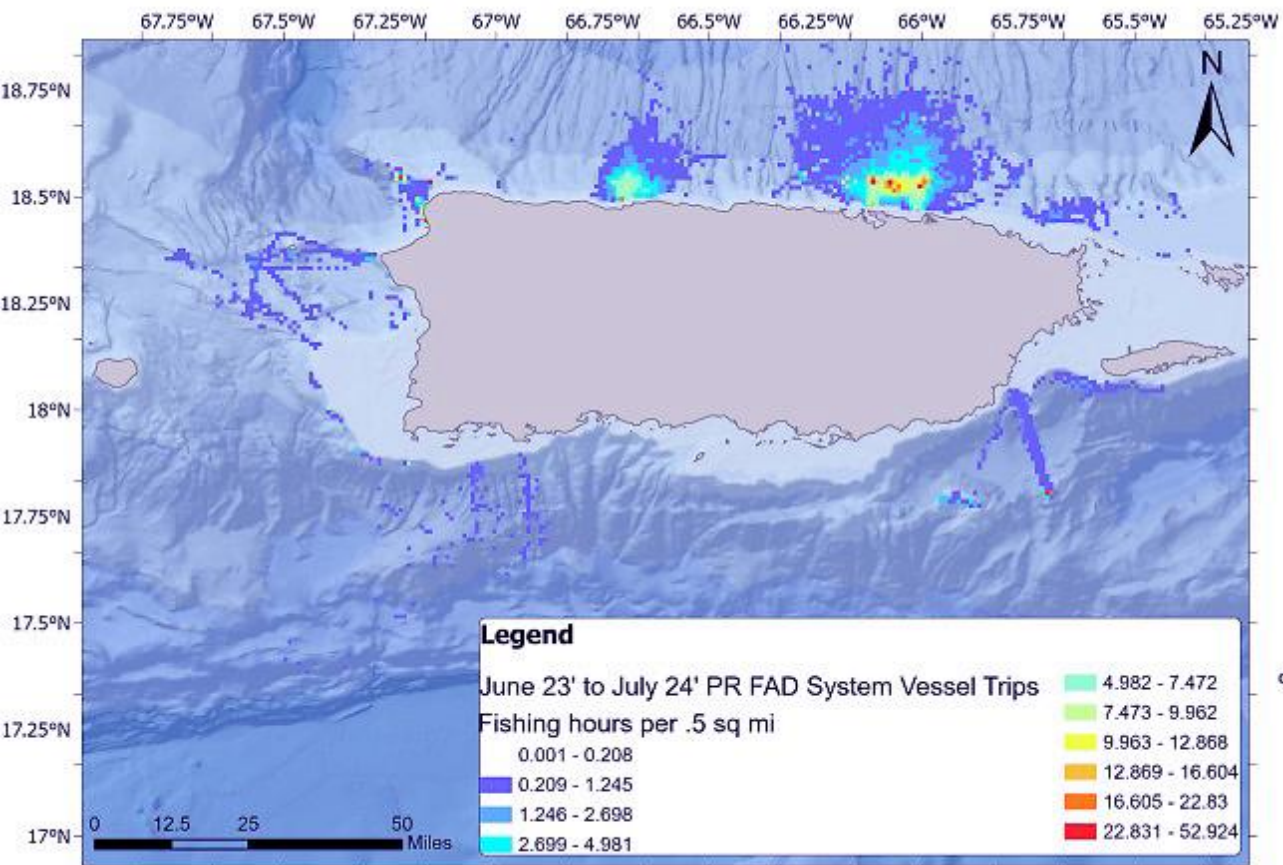
43 recaptures



Ongoing fishery dependent & independent data analysis (PR DR, FL, NC, SC, NJ)

NOAA drifters information

University of South Florida, sargassum info in two areas (Florida & R. Dominicana)



FAD information around PR

3. Life history of priority managed species and evaluating their vulnerability to changing environmental conditions



CFMC initial consultation and planning meeting. Preliminary over 20 species preselected as priority species, ID potential collaborators.



4 meetings with NOAA Fisheries teams to introduce the project, seek feedback, and foster collaboration. Secured stronger connections with NOAA IRA Coordination, SEFSC, NEFSC, HMS among other federal programs.



Advanced intensive review of published and unpublished literature about climate change vulnerability and impacts on the preselected species.

4. Environmental vulnerability to Assess the ecological under a recovery plan: queen conch & Nassau grouper

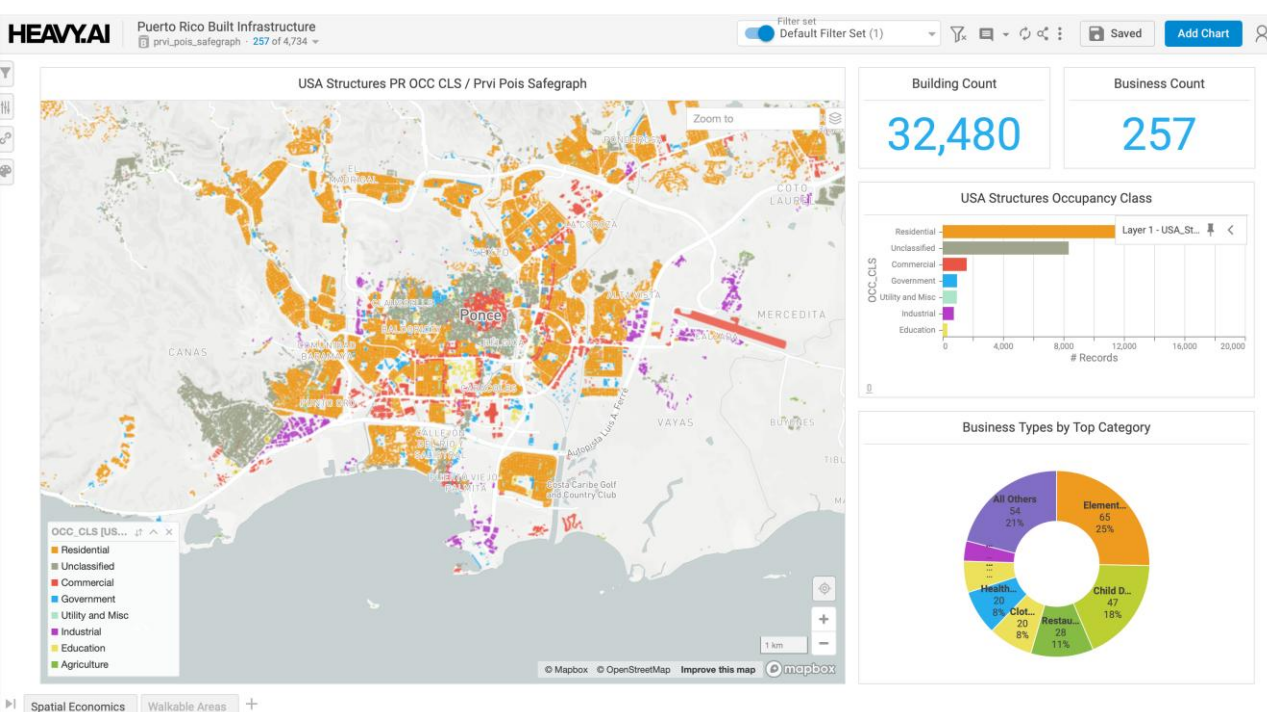
- ✓ Detailed work plan.
- ✓ Acquisition equipment & supplies.
- ✓ Satellite analysis of sargassum dynamics from Cabo Rojo to Guanica to ID key impacted areas & highlight sampling areas.
- ✓ Protocols to gather traditional ecological knowledge and other fishery-related information determined.
- ✓ Began habitat functionality and QC ecology of Queen conch and Nassau grouper.
- ✓ Launched water quality, species abundance, and site conditions field work.





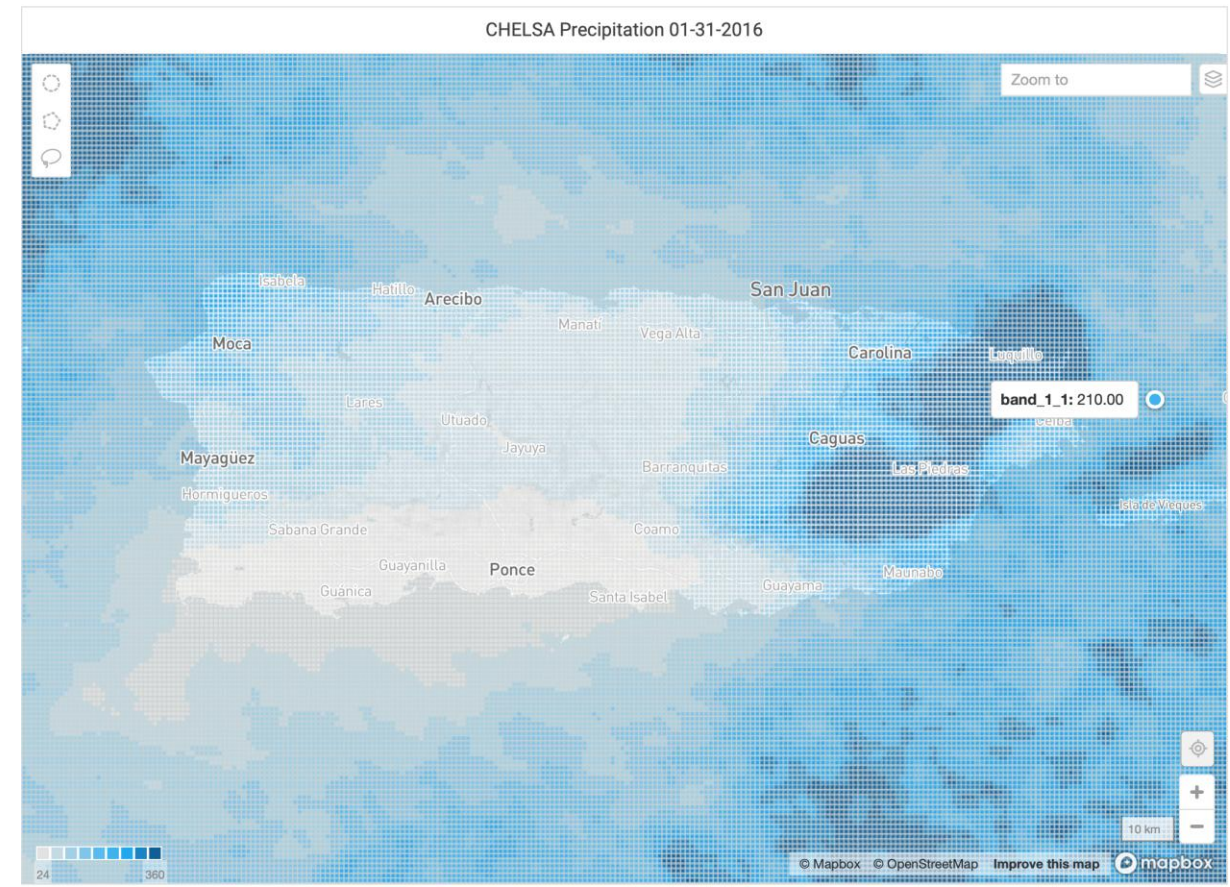
5. Adapting to Extreme events in the U.S. Caribbean: Implementing a Smart Approach to Ensure Sustainable Red Hind and Lobster Fishing

- ✓ First in-person workshop (November 6, 2024, at 77th GCFI, Guadeloupe, FWI). 21 participants with diverse backgrounds and expertise.
- ✓ Identification future scenario planning: 3 dimensions and 2 species.
 - Dimensions: climate, socioeconomics, and management/governance.
 - Factors: coastal development, economic pressures, & shifts in the political and social environment.
- ✓ Literature review and data compilation: to support scenario modeling.
- ✓ Advance physical and economic mapping elements
- ✓ Established collaboration within and outside NOAA programs, *ie*: SEFSC – CEFI, CARICOOS.



Example of Building-level Data for Ponce PR

CHELSA Precipitation 1km Climatology



6. US Caribbean Community of Practice Hub to Operationalize Ecosystems Based Fisheries Management

✓ Fishery Ecosystem Plan (FEP) final draft, combining multiple internal products & other scientific products

✓ Develop an interactive digital platform to cloud-based Data Management and Coordination System (DMACS) to improve expert guidance and community participation

✓ EBFM TAB Working Group, & DPNR will identify long-term funding and develop a plan EBFM CoP Hub performance and maintenance.

✓ Keep project partners and the local community informed of project's progress.

Thank you

Questions?